

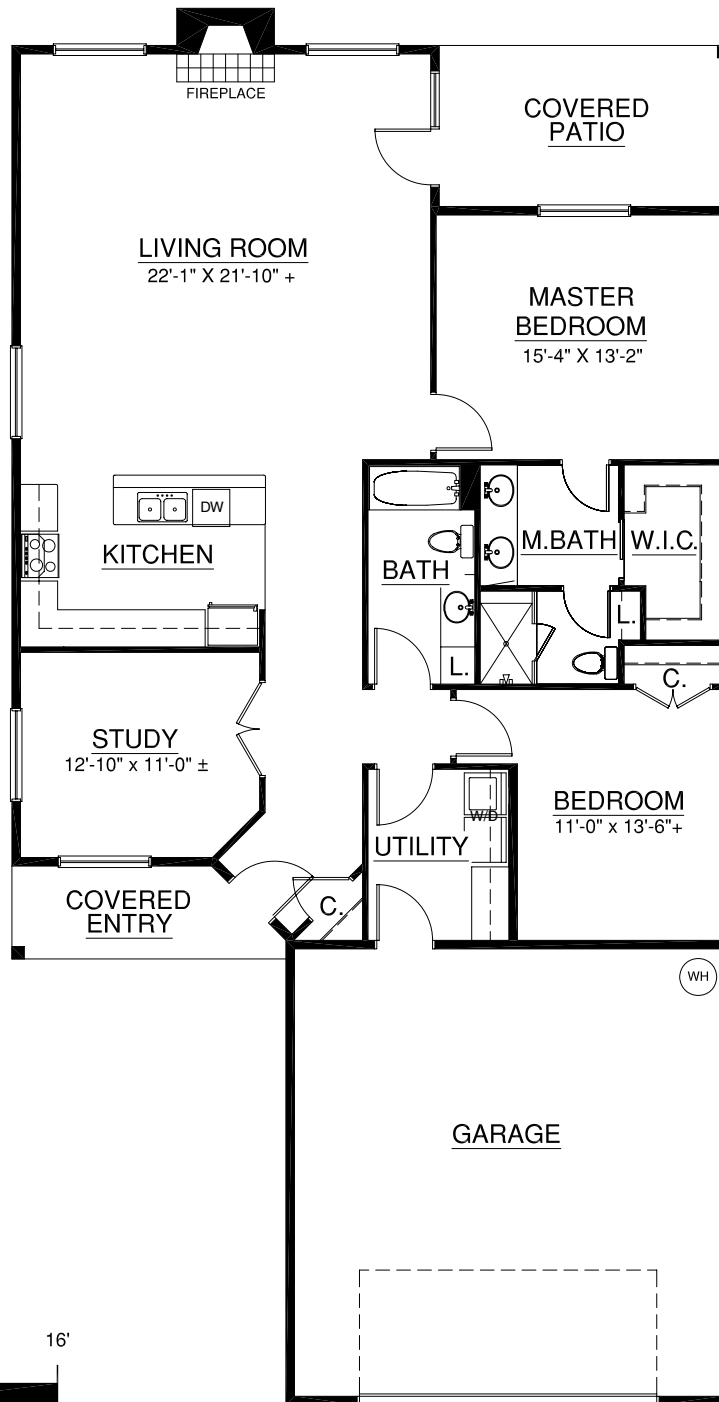
Parkview Homes

Distinctive Adult Living

The Harrison
Main 1,746 sq. ft.
Garage 558 sq. ft.



For illustration purposes only. Square footage, actual room sizes, and features may vary. Square footages are established from face of brick veneer. See construction documents.



Touchmark at Coffee Creek

2801 Shortgrass Road | Edmond, OK 73003 | 405-340-1975 | TouchmarkEdmond.com

