

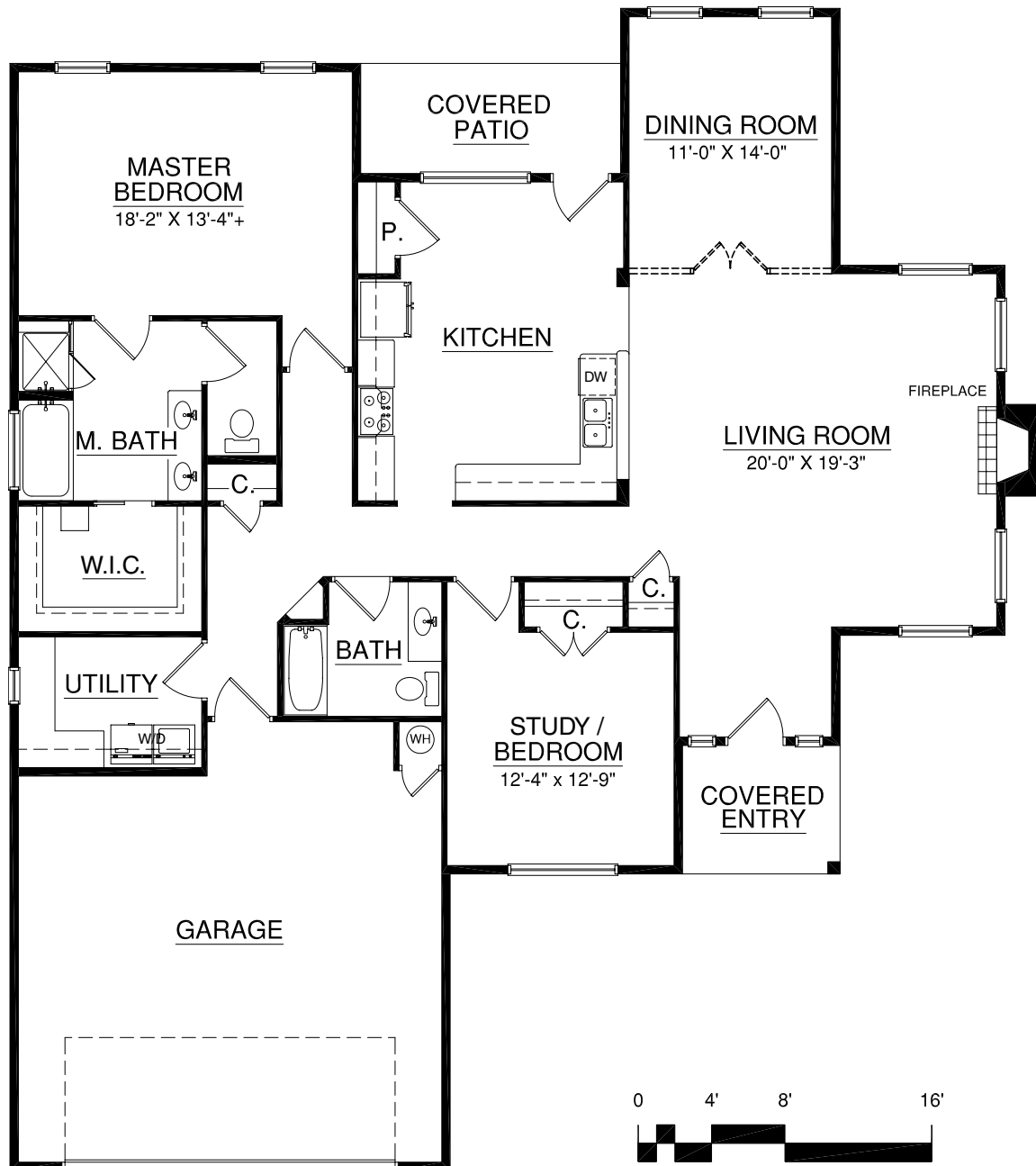
Parkview Homes

Distinctive Adult Living

The Roosevelt
Main 1,994 sq. ft.
Garage 585 sq. ft.



For illustration purposes only. Square footage, actual room sizes, and features may vary. Square footages are established from face of brick veneer. See construction documents.



Touchmark at Coffee Creek

2801 Shortgrass Road | Edmond, OK 73003 | 405-340-1975 | TouchmarkEdmond.com

